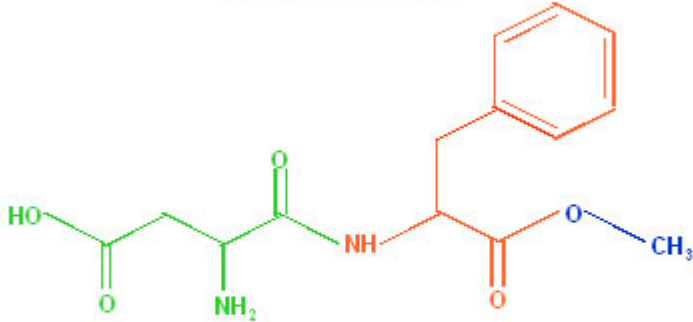


# Artificial “Biomolecules”

## Aspartame



L-aspartyl-L-phenylalanine methyl ester

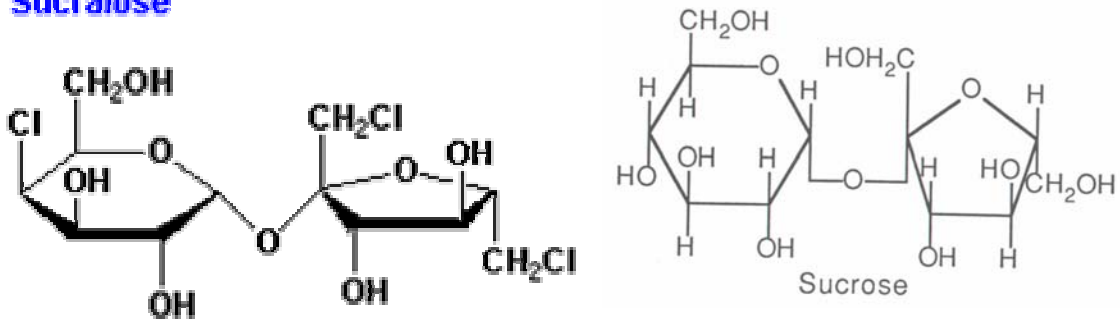
Aspartate

Phenylalanine

Methanol

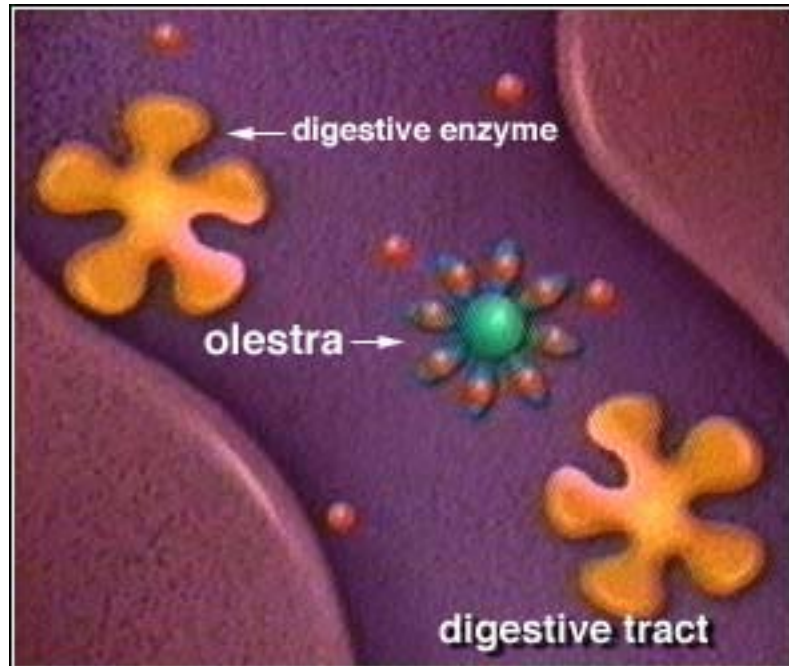
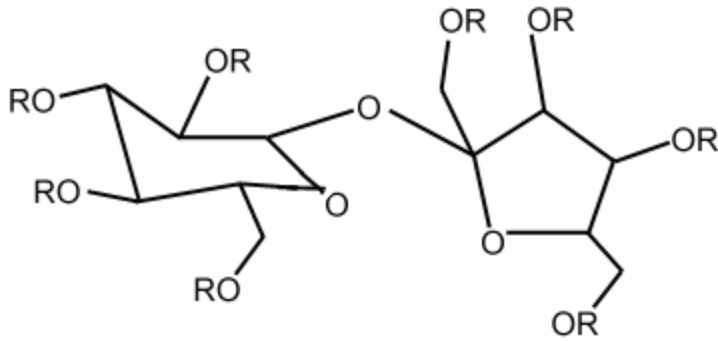
1,6-Dichloro-1,6-dideoxy- $\beta$ -D-fructofuranosyl-4-chloro-4-deoxy- $\alpha$ -D-galactopyranoside

## Sucralose



BioSite 6/8/03

# OLESTRA (Sucrose with 6 - 8 Fatty Acids)



(CNN)